

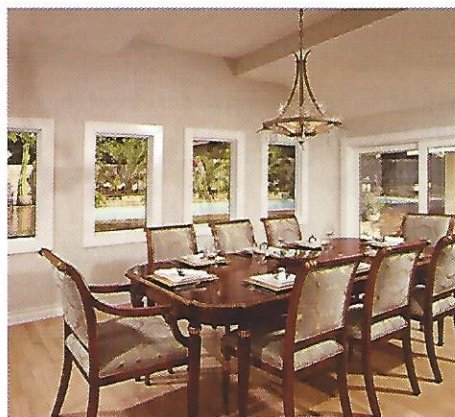
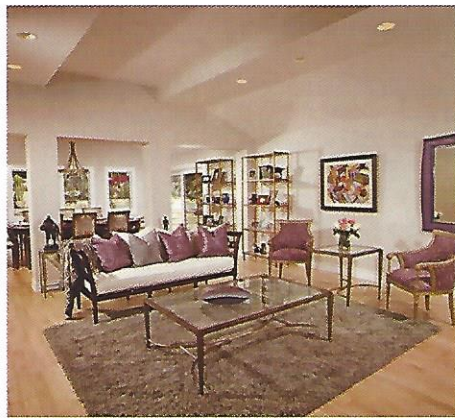
Not an Average Ranch

A 70s ranch style home with a contemporary interior renovation and a mix of traditional and eclectic décor.

by *Jana Rosenblatt*
Community contributor

When this high-level executive couple transferred from the East Coast to the San Fernando Valley, they looked forward to embracing the California lifestyle. Their vision included a sparkling private pool, sun-filled rooms with ample living space, home offices, and even a workout room. They selected this 1970s ranch style home with a traditional interior and completely modernized it. Architecturally, the goal was to simplify materials for easy up keep and open up the space to allow natural light to flood the interior by day. Recessed lighting was installed to help the space retain that open feeling at night.

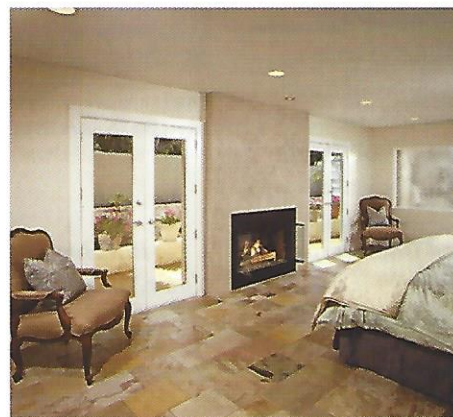
As pictured in the top left photo, a contemporary home with signature hard lines and stark surfaces, can still be made warm and inviting. As a designer,



I can strike a balance —simultaneously highlighting the modern, clean surfaces while softening the space through color, fabric and lighting choices. In this project, Jana Design Interiors embraced our clients' eclectic tastes in furniture and fixtures to create this beautiful outcome.

With the furnishings, our goal was to mix the pieces they already owned with new selections that would enhance the open floor plan between the dining room and living room. The design trick is to relate the spaces with color and style, while accenting with unique elements to give each space its own identity.

We found a fantastic traditional dining table and chairs on craigslist.com and then updated the upholstered seats



From left to right: A contemporary home with signature hard lines and stark surfaces; Accent chairs can brighten up a living room; Putting a fireplace to the master bedroom can add warmth to the room.

Photos courtesy of Jana Rosenblatt

with a spectacular contemporary fabric. In the bottom left photo you can see that we treated the accent chairs in the living room the same way. Along those lines, we placed the glass and painted-metal étagères side-by-side, with one in each the living room and dining room to connect the two spaces and create balance. These tall elements also help to break up the vast horizontal space with a light, visual interest.

By selecting the gilded-metal coffee and side table, as well as the gilt dining room fixture, we visually linked the spaces while adding a bit of that “Hollywood Glam.” The use of a “floating” area rug connects the eclectic seating in the living room. The distinctive rug draws us in to the room with warm textures, even though its cool colors are a reflection of the pool that can be seen from the dramatic entry to the home.

In the master bedroom and bath, we juxtaposed hard materials with warm tones. As pictured in the bottom right photo, the tinted concrete fireplace wall is unique, while the fireplace itself adds warmth. The slate tiles used on the floors and walls are a cooler, hard surface made warm by the selection of natural texture and color.

They continue all the way into the master bath and are used for the wall of the tub surround as well. The tall, unobstructed panels of glass in the doors and windows again add the feeling of height in a long, horizontal space.

The use of privacy glass between the bedroom and bath allows natural light to flow in to both rooms, while the textured glass visually warms the hard surface. The fabric selections in upholstery and bedding carry the soft golds, plums and blues found throughout the home to create a harmonious flow.

We would love to help you create the same successful design and flow in your home reflecting your unique style and goals.

For more information, call 818-765-1915 to make an appointment for your in-home consultation. For more examples of designs, visit janadesigninteriors.com.